

THIS SURVEY MEETS STANDARDS AS OUTLINED IN CORPS OF ENGINEERS' HYDROGRAPHIC SURVEY MANUAL EM1110-2-1003, DATED NOVEMBER 30, 2013 FOR NAVIGATION AND DREDGING SUPPORT SURVEYS.

HORIZONTAL REFERENCE - NAD 83, NEW JERSEY STATE PLANE, ZONE 2900, U.S. FOOT.

VERTICAL REFERENCE - MEAN LOWER LOW WATER, WHICH IS 2.73' BELOW N.A.V.D. 88.

GEOID 18 AND NOAA TIDAL EPOCH: 1983 - 2001 WERE USED. SOUNDINGS ARE EXPRESSED IN FEET AND TENTHS AND REFER TO MEAN LOWER LOW WATER.

THE INFORMATION DEPICTED ON THIS MAP REPRESENT THE RESULTS OF SURVEYS MADE ON THE DATES INDICATED AND CAN ONLY BE CONSIDERED AS INDICATING THE GENERAL CONDITIONS EXISTING AT THAT TIME.

THE POSITIONS OF THE AIDS TO NAVIGATION ARE PROVIDED FOR INFORMATION ONLY, AND SHOULD NOT BE USED FOR NAVIGATION.

THE LIMITS OF THE FEDERAL CHANNEL DEPICT THE MOST CURRENT CHANNEL FRAMEWORK AVAILABLE WHICH CAN ALSO BE DOWNLOADED HERE:  
<http://navigation.usace.army.mil/Survey/Framework>

BASE MAPPING LINEWORK OR ORTHOPHOTOGRAPHY HAS BEEN COMPILED FROM A VARIETY OF SOURCES AND DATES AND IS INTENDED TO PORTRAY GENERAL CHARACTERISTICS OF THE SHORELINE AND OTHER FEATURES. TEMPORAL CHANGES MAY HAVE OCCURRED SINCE THIS DATA SET WAS COLLECTED AND SOME PARTS OF THE DATA MAY NO LONGER BE AN ACCURATE REPRESENTATION OF THE SURFACE CONDITIONS.

**Legend**

- Shoalest Sounding per Quarter
- Channel Framework
- Centerline

6 - 60

5 - 6

4 - 5

3 - 4

2 - 3

1 - 2

-3.22 - 1

US Army Corps of Engineers  
Philadelphia District

**NEW JERSEY INTRACOASTAL WATERWAY**

**IW 14 - MKR #344 to MKR #383**

**EXAMINATION**

Surveyed By: \_\_\_\_\_

Checked By: \_\_\_\_\_

Published By: \_\_\_\_\_

First Scale: \_\_\_\_\_

Approved: \_\_\_\_\_

Chief, Survey Section

MR #344 to MKR #356 -- 01 AUG 23

MR #356 to MKR #357 -- 27 JUL 23

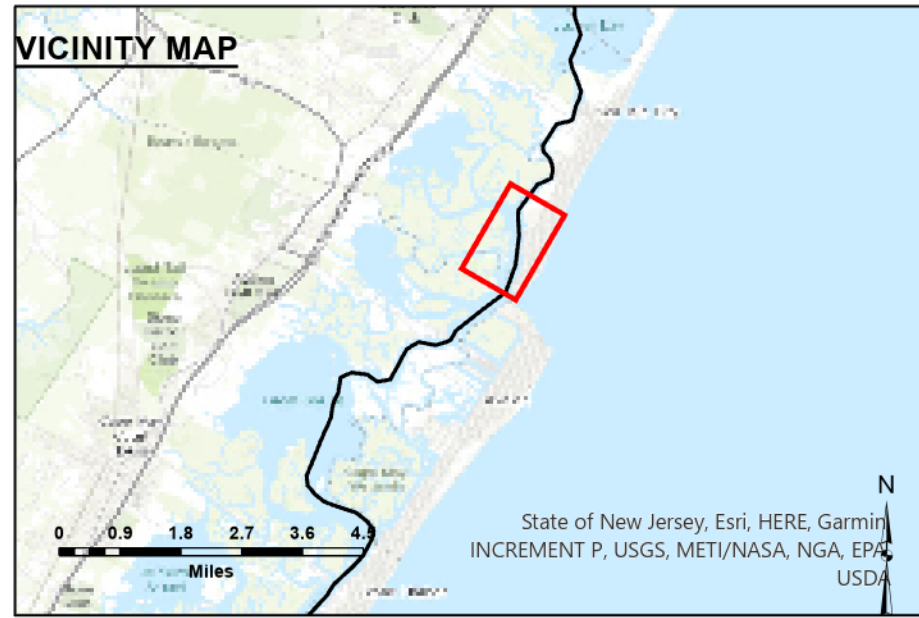
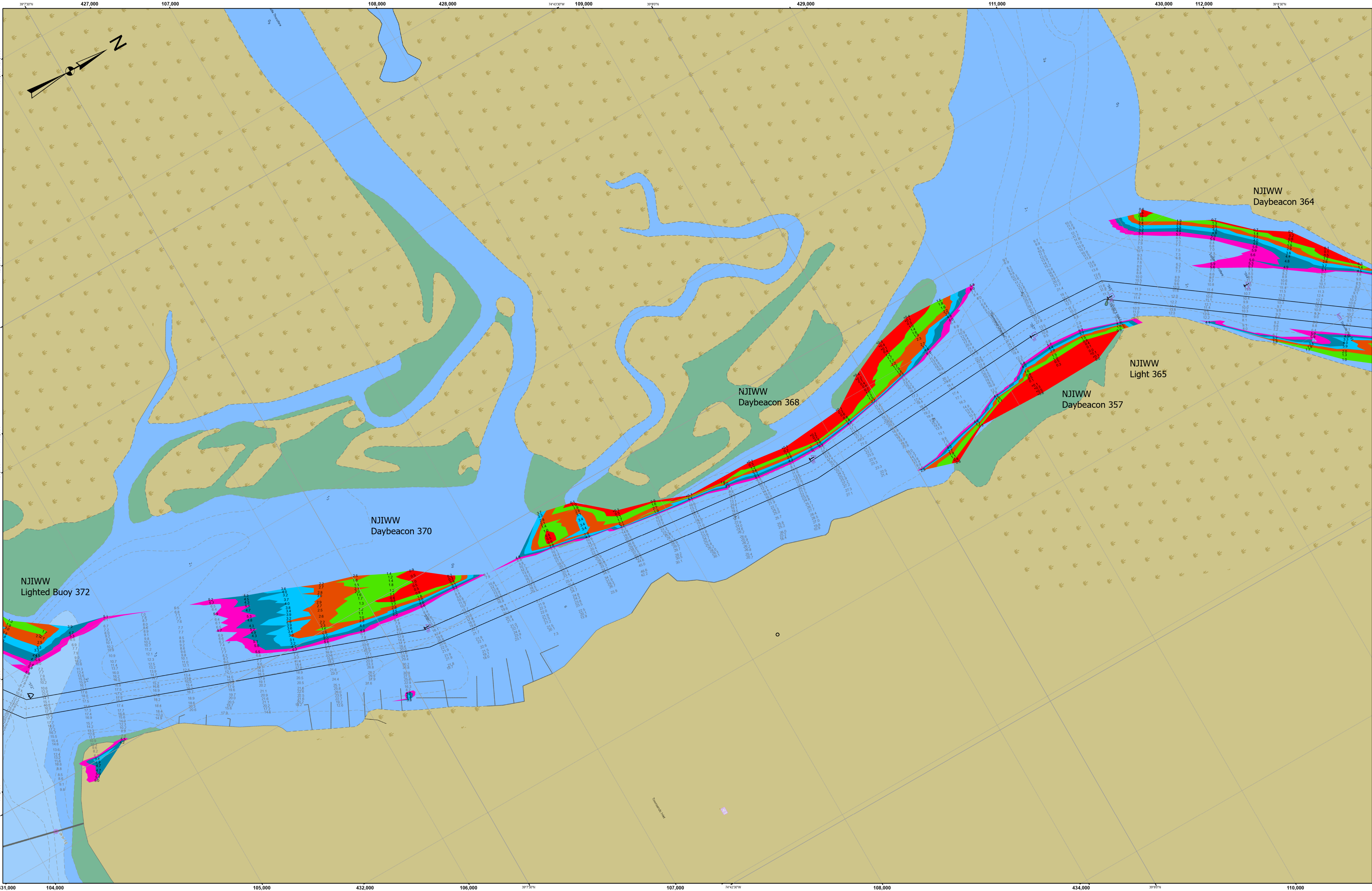
MR #357 to MKR #374 -- 26 JUL 23

MR #374 to MKR #383 -- 20 JUL 23

DISCLAIMER

This data is provided for general information only. It is not intended to be used for navigation. The Corps of Engineers does not warrant the accuracy or reliability of the information. The Corps of Engineers is not responsible for any errors or omissions. The Corps of Engineers is not responsible for any damages, whether direct or indirect, arising from the use of this information.





THIS SURVEY MEETS STANDARDS AS OUTLINED IN CORPS OF ENGINEERS' HYDROGRAPHIC SURVEY MANUAL EM1110-2-1003, DATED NOVEMBER 30, 2013 FOR NAVIGATION AND DREDGING SUPPORT SURVEYS.

HORIZONTAL REFERENCE - NAD 83, NEW JERSEY STATE PLANE, ZONE 2900, U.S. FOOT.

VERTICAL REFERENCE - MEAN LOWER LOW WATER, WHICH IS 2.73' BELOW N.A.V.D. 88.

GEOID 18 AND NOAA TIDAL EPOCH: 1983 - 2001 WERE USED. SOUNDINGS ARE EXPRESSED IN FEET AND TENTHS AND REFER TO MEAN LOWER LOW WATER.

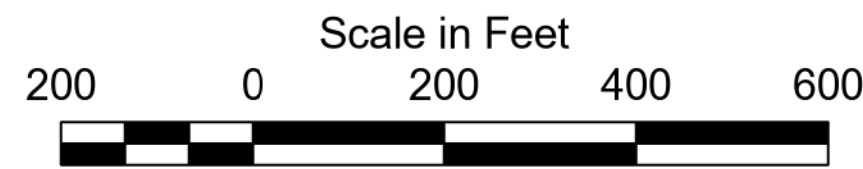
THE INFORMATION DEPICTED ON THIS MAP REPRESENT THE RESULTS OF SURVEYS MADE ON THE DATES INDICATED AND CAN ONLY BE CONSIDERED AS INDICATING THE GENERAL CONDITIONS EXISTING AT THAT TIME.

THE POSITIONS OF THE AIDS TO NAVIGATION ARE PROVIDED FOR INFORMATION ONLY, AND SHOULD NOT BE USED FOR NAVIGATION.

THE LIMITS OF THE FEDERAL CHANNEL DEPICT THE MOST CURRENT CHANNEL FRAMEWORK AVAILABLE WHICH CAN ALSO BE DOWNLOADED HERE:

<http://navigation.usace.army.mil/Survey/Framework>

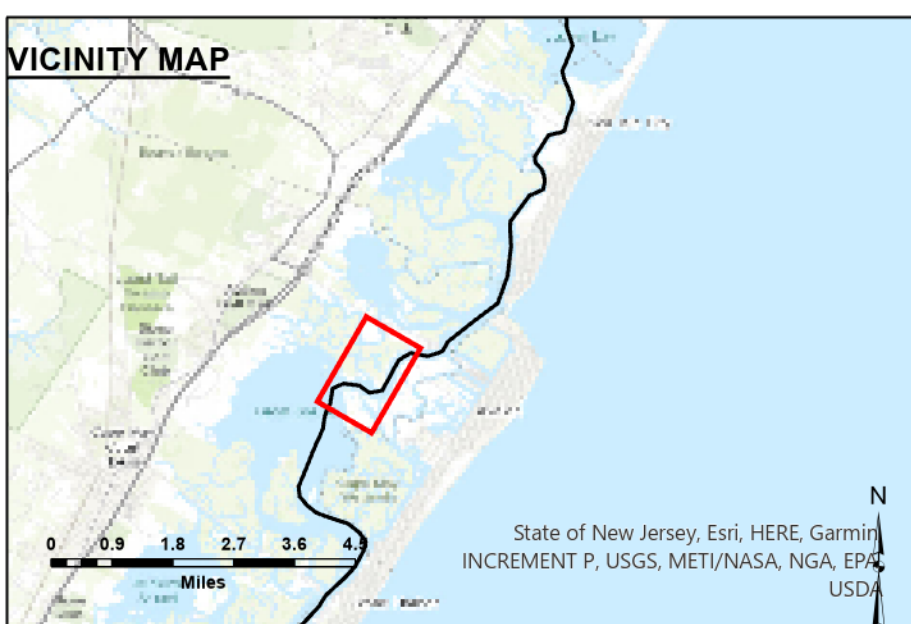
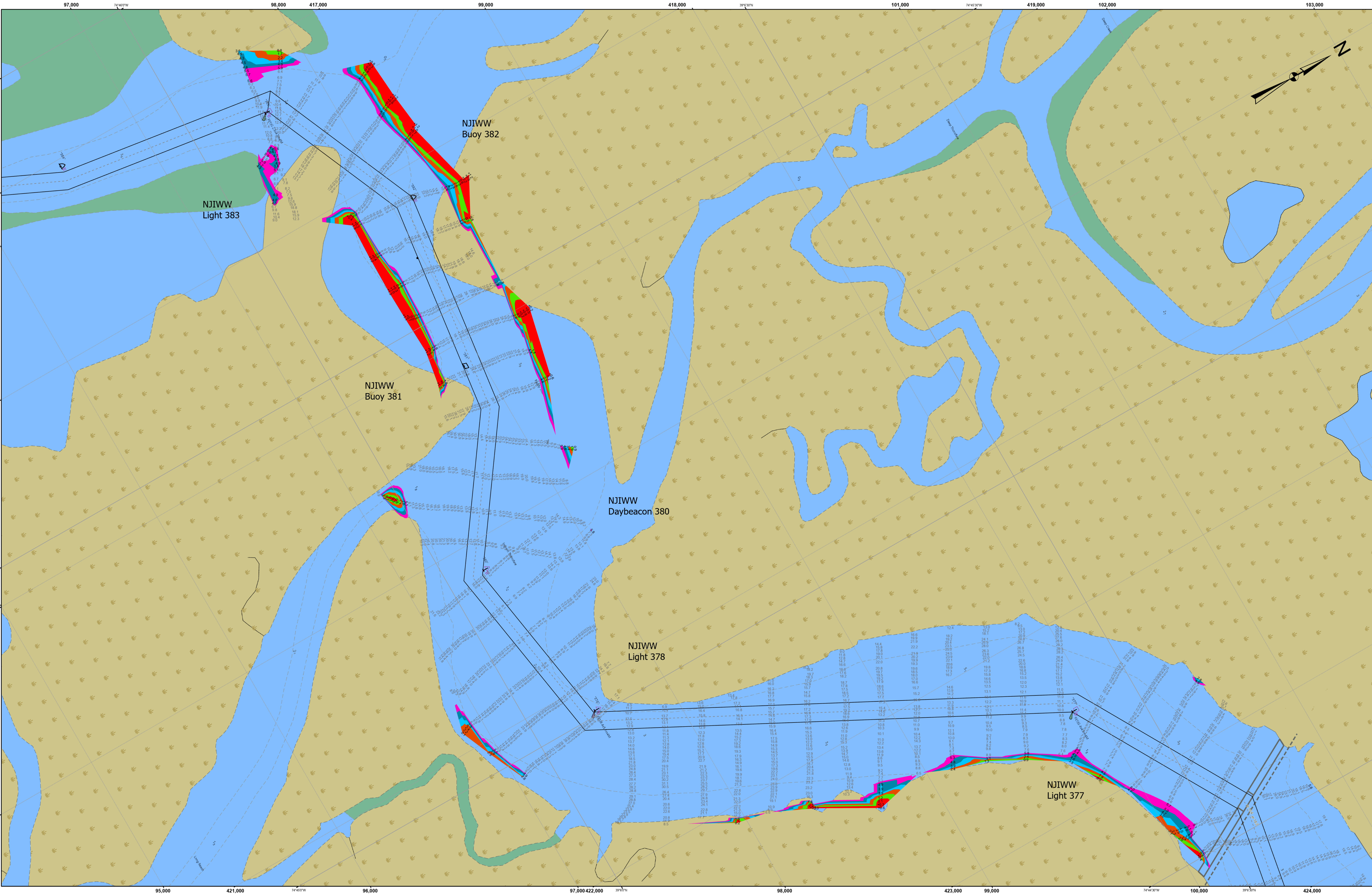
BASE MAPPING LINEWORK OR ORTHOPHOTOGRAPHY HAS BEEN COMPILED FROM A VARIETY OF SOURCES AND DATES AND IS INTENDED TO PORTRAY GENERAL CHARACTERISTICS OF THE SHORELINE AND OTHER FEATURES. TEMPORAL CHANGES MAY HAVE OCCURRED SINCE THIS DATA SET WAS COLLECTED AND SOME PARTS OF THE DATA MAY NO LONGER BE AN ACCURATE REPRESENTATION OF THE SURFACE CONDITIONS.



#### Legend

- Shoalest Sounding per Quarter 6 - 60
- Channel Framework 5 - 6
- Centerline 4 - 5
- 3 - 4
- 2 - 3
- 1 - 2
- 3.22 - 1





THIS SURVEY MEETS STANDARDS AS OUTLINED IN CORPS OF ENGINEERS' HYDROGRAPHIC SURVEY MANUAL EM1110-2-1003, DATED NOVEMBER 30, 2013 FOR NAVIGATION AND DREDGING SUPPORT SURVEYS.

HORIZONTAL REFERENCE - NAD 83, NEW JERSEY STATE PLANE, ZONE 2900, U.S. FOOT.

VERTICAL REFERENCE - MEAN LOWER LOW WATER, WHICH IS 2.73' BELOW N.A.V.D. 88.

GEOID 18 AND NOAA TIDAL EPOCH: 1983 - 2001 WERE USED. SOUNDINGS ARE EXPRESSED IN FEET AND TENTHS AND REFER TO MEAN LOWER LOW WATER.

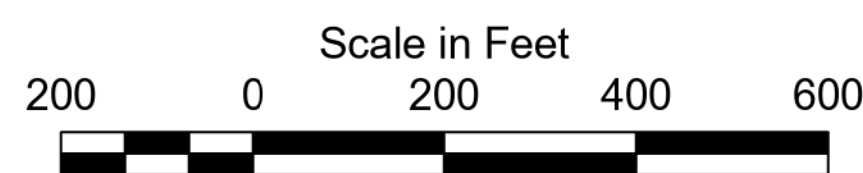
THE INFORMATION DEPICTED ON THIS MAP REPRESENT THE RESULTS OF SURVEYS MADE ON THE DATES INDICATED AND CAN ONLY BE CONSIDERED AS INDICATING THE GENERAL CONDITIONS EXISTING AT THAT TIME.

THE POSITIONS OF THE AIDS TO NAVIGATION ARE PROVIDED FOR INFORMATION ONLY, AND SHOULD NOT BE USED FOR NAVIGATION.

THE LIMITS OF THE FEDERAL CHANNEL DEPICT THE MOST CURRENT CHANNEL FRAMEWORK AVAILABLE WHICH CAN ALSO BE DOWNLOADED HERE:

<http://navigation.usace.army.mil/Survey/Framework>

BASE MAPPING LINEWORK OR ORTHOPHOTOGRAPHY HAS BEEN COMPILED FROM A VARIETY OF SOURCES AND DATES AND IS INTENDED TO PORTRAY GENERAL CHARACTERISTICS OF THE SHORELINE AND OTHER FEATURES. TEMPORAL CHANGES MAY HAVE OCCURRED SINCE THIS DATA SET WAS COLLECTED AND SOME PARTS OF THE DATA MAY NO LONGER BE AN ACCURATE REPRESENTATION OF THE SURFACE CONDITIONS.



#### Legend

- Shoalest Sounding per Quarter
  - Channel Framework
  - - - Centerline
- |           |       |
|-----------|-------|
| 6 - 60    | 5 - 6 |
| 4 - 5     | 3 - 4 |
| 2 - 3     | 1 - 2 |
| -3.22 - 1 |       |



MKR #344 to MKR #356 -- 01 AUG 23  
MKR #356 to MKR #357 -- 27 JUL 23  
MKR #357 to MKR #374 -- 26 JUL 23  
MKR #374 to MKR #383 -- 20 JUL 23

THESE MATERIALS ARE PROVIDED "AS IS." THE GOVERNMENT MAKES NO WARRANTY, EXPRESS OR IMPLIED, REGARDING THE ACCURACY, COMPLETENESS, OR SUITABILITY OF THE INFORMATION FOR ANY PURPOSE. THE GOVERNMENT DISCLAIMS ANY LIABILITY FOR THE USE OF THIS INFORMATION FOR ANY PURPOSE, INCLUDING BUT NOT LIMITED TO, THE USE OF THIS INFORMATION FOR ANY PURPOSE, INCLUDING BUT NOT LIMITED TO, THE USE OF THIS INFORMATION FOR ANY PURPOSE.

Surveyed By	Surveyed By
Checked By	Checked By
Final Scale	Final Scale
Approved	Approved

NEW JERSEY INTRACOASTAL WATERWAY  
IW 14 - MKR #344 to MKR #383  
EXAMINATION

E-IW-40